

Precision T2

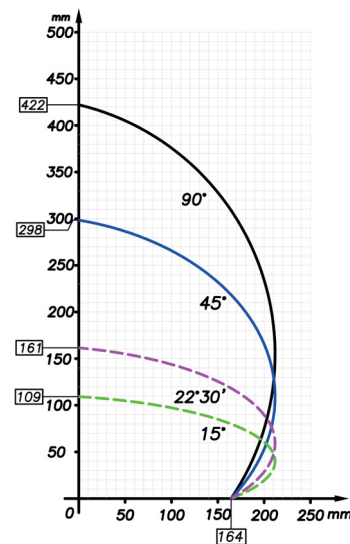
double-head cutting-off machine

Virtual axis of the inclination of the cutting units 01

HS – High Speed 02



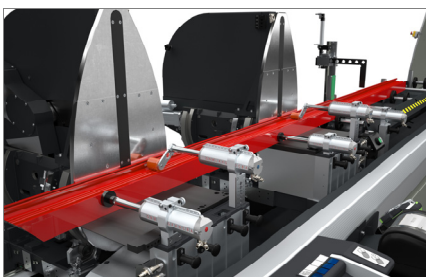
Double-head cutting-off machine with 5 controlled axes for aluminium, PVC and light alloys with automatic movement of the mobile head and electronic management of all 45° (internal) to 15° (external) angles, with a precision, within each degree, of 280 positions. The innovative virtual rotation axis of the cutting units, subject of one of the patents that accompany this machine, as well as conferring absolute rigidity to the system, allows to manage positioning and profile blocking with great accuracy. These features allow to obtain a greater cutting precision than any other machine in its category and the name PRECISION is defined as the main feature. All axes movements take place on guides and slides on ball bearings. The automatic integral protection of the cutting area, the design of the push button control board, from access to the electric and pneumatic panel, make it an advanced model also from a safety and ergonomics point of view. PRECISION T2 has 5 extremely precise numerically-controlled axes, for positioning the mobile head, for inclination of the two cutting units or for the advancement of the blades in cutting phase. Positioning uses an absolute magnetic band, able to keep the memory positioned and to prevent the axes reference operations. The numerical control on all movements allows to manage any operation, including the length of the blades output travel, from an extremely advanced touch screen console. The HS High Speed version envisions an X axis with higher speed and all necessary protections for the automatic work, even unattended, in order to obtain maximum production.



Profile blocking 03

Control 04

Load and unload 05



Precision T2

Double-head cutting-off machine

01

Virtual axis of inclination of the cutting units

The inclination of each head, up to 15° outwards, takes place via two circular guides positioned on four pairs of steel wheels. This solution, subject to patent, allows to eliminate any cutting area obstruction, with advantage of positioning and blocking the profile and offers greater rigidity to traditional systems. Positioning via absolute magnetic band eliminates the necessity of the axes reference and connected cycle times.

02

HS – High Speed

The HS - High Speed version, has a quicker X axis (mobile head positioning) and is fitted with integral protection on the sides and on the rear, in order to operate in complete safety, increasing production. The safety features of this version, completely accessible during functioning, allow to use automatic cutting cycles, also when unattended and thus allowing maximum operability.

03

Profile blocking

With the large availability of space allowed by the virtual axes, the profile is blocked for cutting extremely precisely and safely by two horizontal hold-down devices. For the necessity of vertical blocking, particularly for special cuts, a patented horizontal hold-down device is available, which allows vertical blocking of the profile.

04

Control

The ergonomic and extremely advanced control panel uses a 10,4" touch screen display and completely customised software and is full of functionalities developed specifically for this machine, in Microsoft Windows® environment. The machining cycle is optimised by the creation of the cutting lists, thus allowing the reduction of waste and the decrease in times for the piece load-unload.

05

Load and unload

Precision can be equipped with roller conveyor on mobile head, for standard load and unload or on fixed head for load from left side. A pneumatic stop device on the mobile head is available to ease positioning of the profile in this loading mode.

MACHINE FEATURES

X axis electronic control	•
Standard X axis positioning speed	25 m/min
HS version X axis positioning speed	35 m/min
HS version X axis positioning speed (optional)	50 m/min
Mobile head position detection via direct measuring system with absolute magnetic band	•
Mobile head inclination detection via direct measuring system with absolute magnetic band	•
Intermediate angles electronic control	•
Max. internal inclination	45°
Max. external inclination	15°
Advancement of blade with electronic axis	•
Useful cut, according to model (m)	5 / 6
Widia blade	2
Blade diameter	550
Blade motor power (kW)	2,64
Electronic measurer of profile depth	○

SAFETY DEVICES AND PROTECTIONS

Electric activation front integral protection	•
Side protection tunnel and right and left wall connection fencing (HS version only)	•
Fourth side fencing (HS version only)	○

POSITIONING AND LOCKING OF PROFILE

Pair of horizontal pneumatic clamps with "low pressure" device	•
Pair of vertical fastening horizontal clamps	○
Pair of additional horizontal clamps	○
Pneumatic profile intermediate support	○
Roller conveyor on mobile head with interlocking profile pneumatic supports	•
Profile support roller conveyor on fixed head for profile input from left	○
Pneumatic reference stroke on mobile head for profile input from left	○
Conveyor belt for step-by-step or automatic cut	○