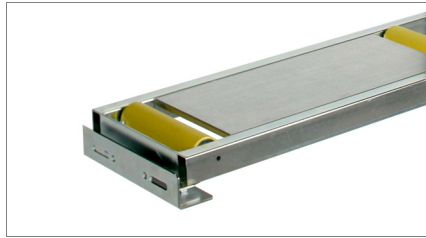


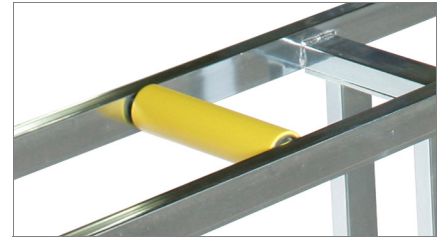


Loading roller conveyor
Roller conveyor



Side view

01

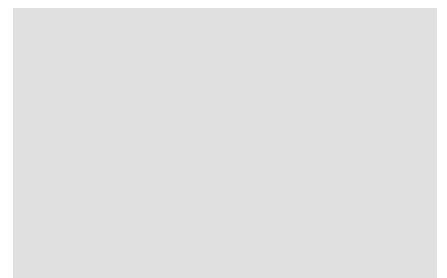
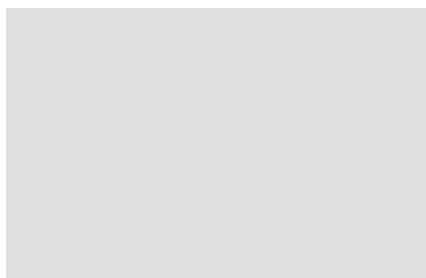
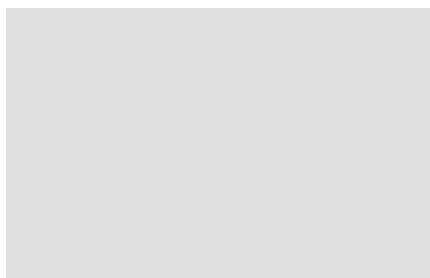


Roll

02



Tubular steel construction with adjustable mounting feet: with rolls size 240 mm, roller conveyor length is 3500 mm; with rolls size 440 mm, roller conveyor length is 4000 mm.



Loading roller conveyor

Roller conveyor

01

Side view

Accurate and rigid connection to the cutting machine is via a special steel bracket.

02

Roll

PVC covered steel rolls, size 240/440 mm, allow efficient conveying of the profile, with no risk of surface damage.